



Hevelius Close | | Greenwich | SE10 0HR

£2,700 Per Month



**LEAFY
ESTATES**

Key features

- 3 Bedroom Terraced House to Rent SE10
- Maze Hill Rail Station - 10 Minutes walk
- Greenwich Station - 20 mins walk

Description

We are proud to present this delightful 3-bedroom, 1-bathroom terraced house, ideally located in a popular and well-connected area of London.

The property is available to move in from 30 January 2024 and offers comfortable, flexible living. It benefits from available parking and private garden access, making it ideal for families or professional sharers.

The property is within walking distance of a train station, hospital, supermarket, and a variety of local shops, making it ideal for families and professionals alike.

Location highlights:

Great transport links

Maze Hill Rail Station - 10 Minutes walk

Greenwich Station - 20 mins walk

The Blackheath Hospital - 25 minutes walk

Nearest Local Shop - 5 minutes

Nearest Supermarket - 10 minutes

Quiet residential setting

Key Features:

3 bedrooms

1 bathroom

Terraced house

Garden access

Available parking

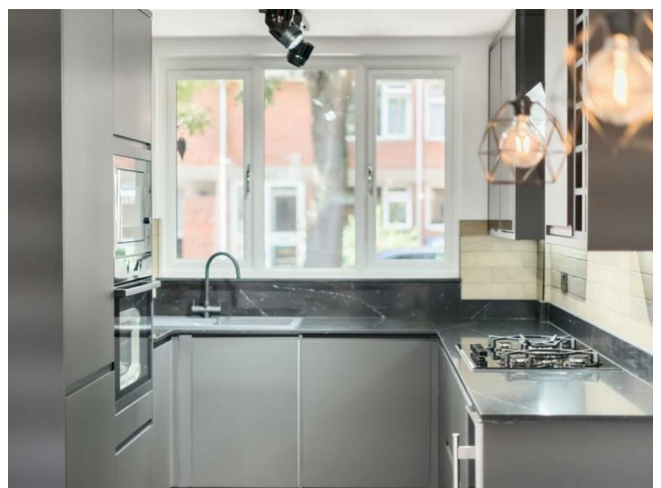
Furnished or unfurnished (tenant's choice)

EPC RATING: C

COUNCIL TAX BAND: C

BILLS EXCLUDED!

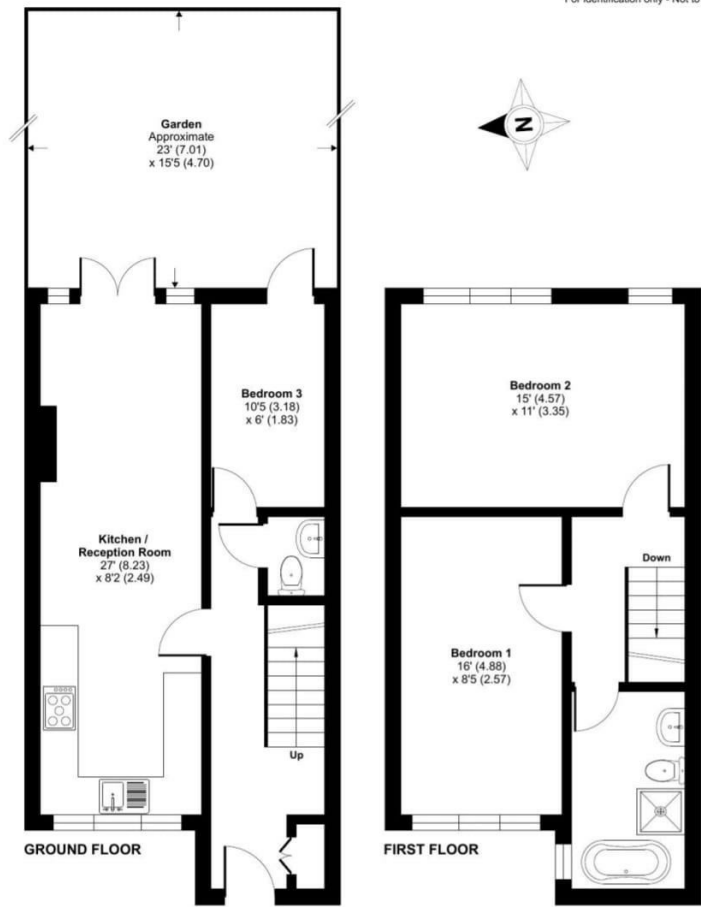
Directions






Hevelius Close, London, SE10

Approximate Area = 857 sq ft / 79.6 sq m
For identification only - Not to scale



Energy Efficiency Rating		
	Current	Potential
Very energy efficient - lower running costs		
(92 plus) A		
(81-91) B		
(69-80) C		
(55-68) D		
(39-54) E		
(21-38) F		
(1-20) G		
Not energy efficient - higher running costs		
England & Wales		EU Directive 2002/91/EC 

Council Tax Band C EPC Rating



68 South Hill Avenue
Harrow
HA2 0NH
02081501988
info@leafyestates.co.uk
leafyestates.co.uk